

est 1979

Jeremy
Leaf & Co.



7 Wilmer Way, London, N14 7JD

£1,395,000

- 0.4 miles to Arnos Grove Station
- Dual Access Gated Driveway
- Secluded Patio and Garden
- Proximity to Green Spaces
- Council Tax Band G
- Six Bedrooms (two en-suite)
- Garage
- Two Reception Rooms
- Four Bathrooms (two en-suite)
- Open Plan Kitchen / Dining Area

863 High Road, London, N12 8PT
020 8446 4295

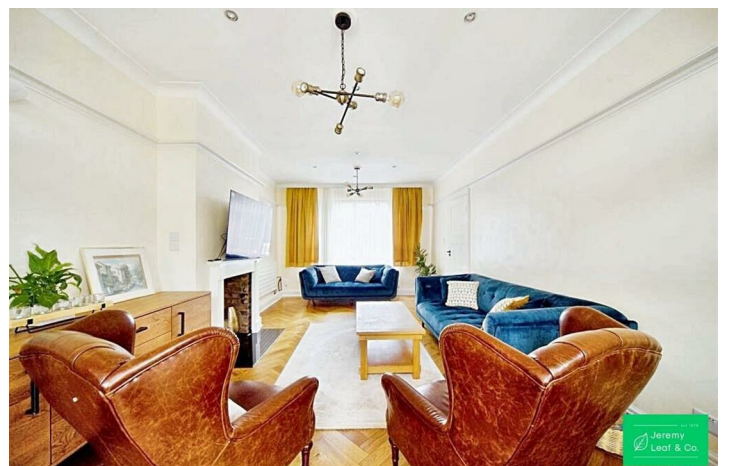
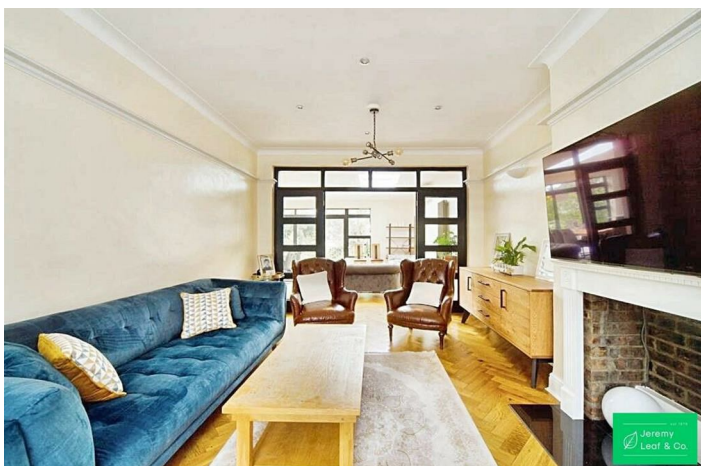
property@jeremyleaf.co.uk
<https://www.jeremyleaf.co.uk/>

7 Wilmer Way, London N14 7JD

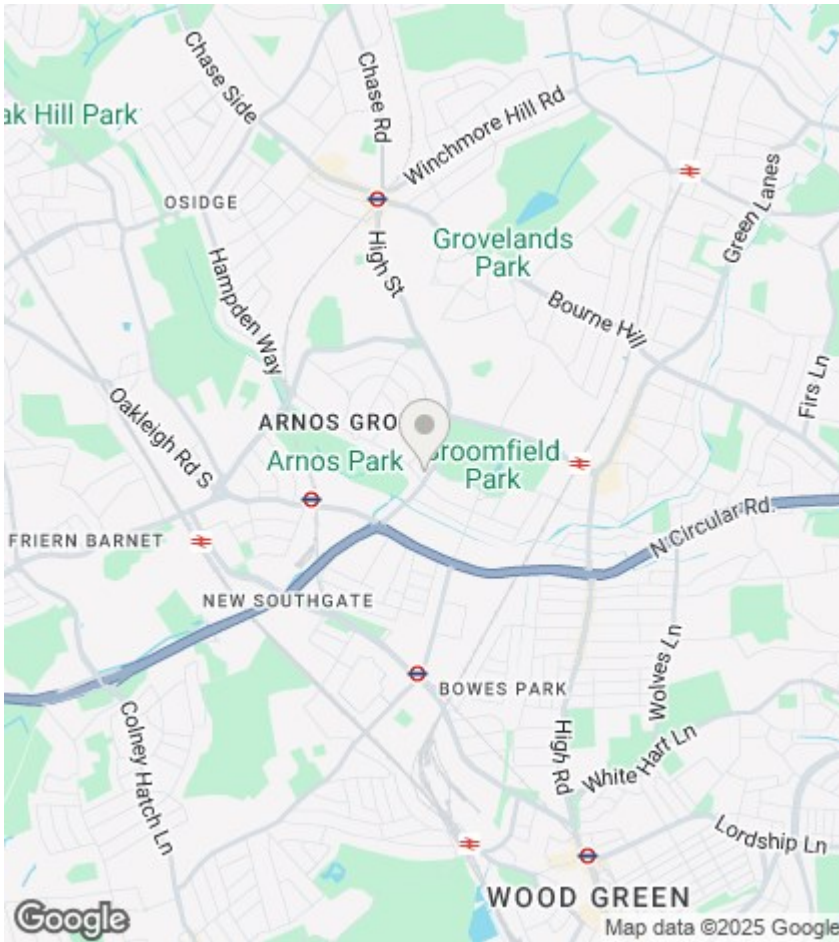
This beautifully-presented semi-detached home offers over 2,000 sq. ft. of flexible living space across three floors. Comprising six bedrooms, four bathrooms (two en-suite), two reception rooms, a 30ft kitchen/dining area, and a shower/utility room with internal garage access. Situated on a popular turning near Broomfield Park, the property is close to local amenities, sought-after schools and transport links. A gated driveway and adaptable layout make it an ideal family home.

 6  4  2  D

Council Tax Band: G







Directions

Viewings

Viewings by arrangement only. Call 020 8446 4295 to make an appointment.

EPC Rating:

D

